

## 'Mondriane' 280 Spencer St, Melbourne



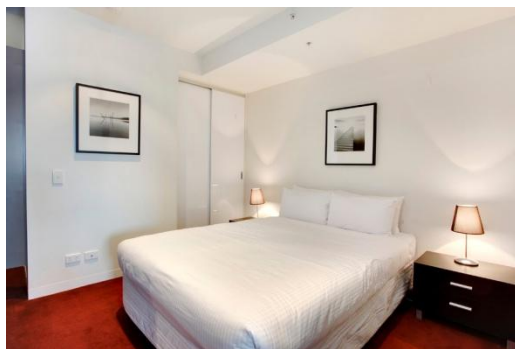
Located in Melbourne's Central Business District the Mondriane Apartments on Spencer Street are only a few minutes from the Southern Cross Railway Station and a short tram ride to the heartland of the city shopping. With cafes, restaurants and shopping at your doorstep these apartments offer convenience and lifestyle.



Tastefully presented, this fully furnished one bedroom apartment comprises of a master bedroom with built in robes, large bathroom and an open plan living dining area opening out onto a private balcony.



The galley kitchen features a marble topped bench, dishwasher and gas cooking. A European laundry and air-conditioning ensure every comfort is catered for.



This residential apartment complex has a security entrance and a 20 metre pool and gymnasium located on the 25th floor.



K113, 63 Turner Street  
Port Melbourne VIC 3207  
Ph: +61 3 9279 7200  
Fax: +61 3 9646 0474  
[www.corporatekeys.com.au](http://www.corporatekeys.com.au)