

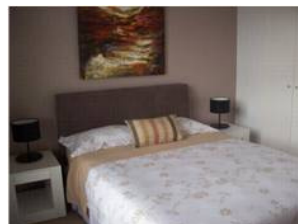
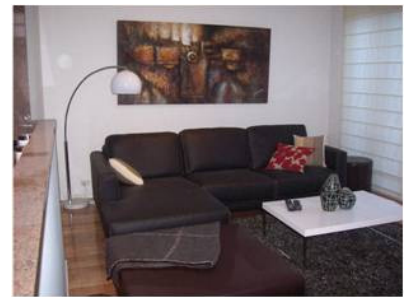
Townhouse 3/1 Foster Street, St Kilda



This European style townhouse is quietly nestled in amongst lush trees in one of Melbourne's most cosmopolitan and vibrant areas, close to the famous Acland Street cafés and shops, St Kilda Esplanade, beach and nightlife.

This double storey contemporary townhouse comprises two spacious bedrooms with built in robes, fully equipped modern kitchen with stainless steel appliances; quality fittings in the bathroom and onsite parking.

This townhouse is well appointed and offers a large open plan lounge/dining area with polished floorboards, air-conditioning, large plasma TV and surround sound, and opens out onto a beautifully appointed courtyard/barbeque area which is perfect for entertaining or just relaxing after work.



Weekly rental includes all utility connections and ongoing usage charges, telephone connection, line rental, local telephone calls, and a complimentary Welcome Hamper.